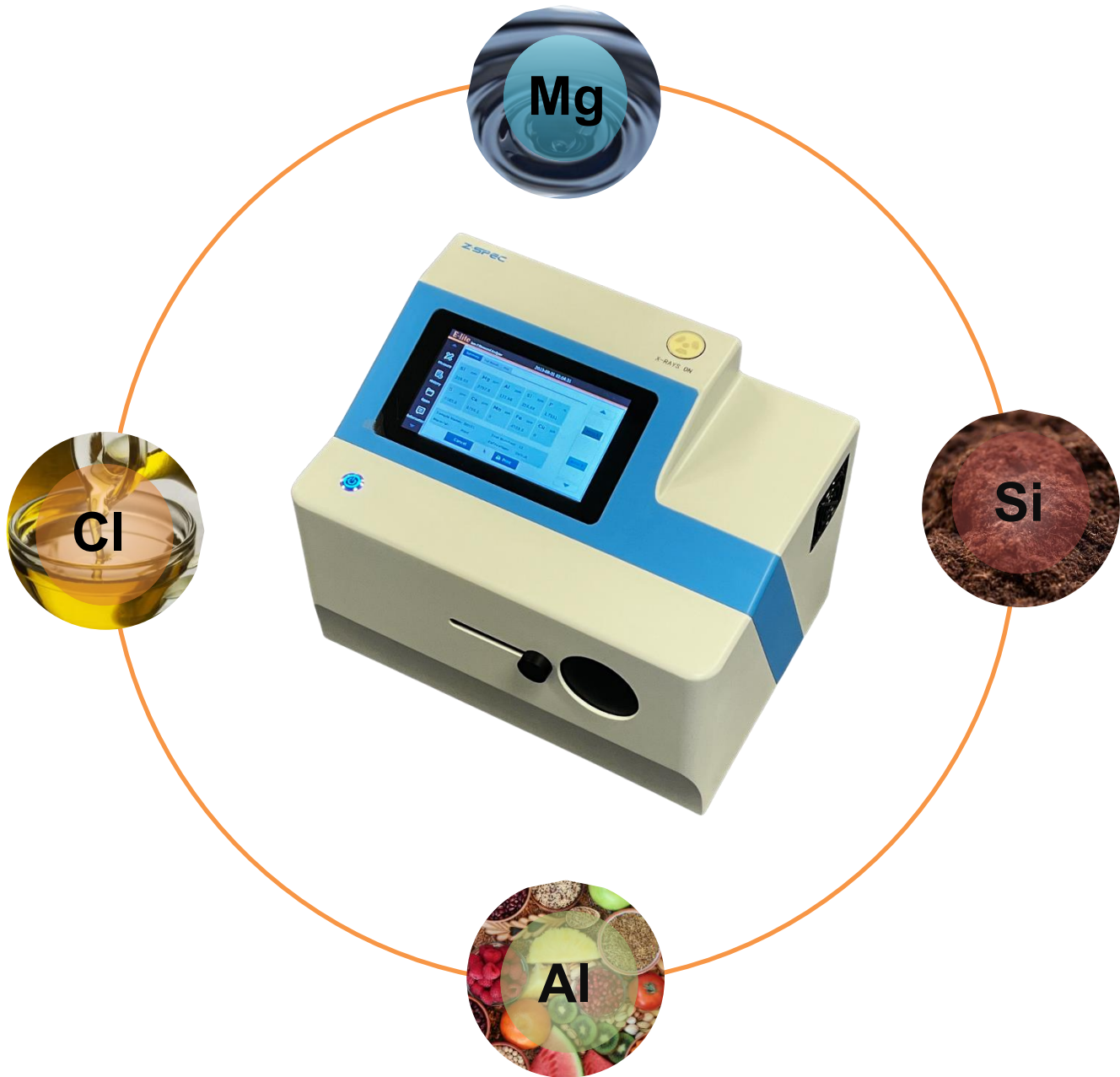


## E-lite

Quantify Low-Z elements in Food and Soil



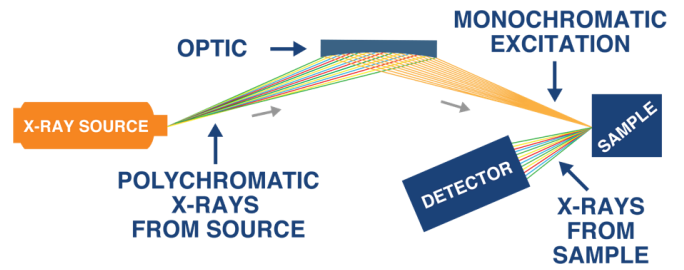
The E-lite series delivers high-precision low-Z elemental analysis from Na to Ca across a broad measurement range, for rapid monitoring of critical elements like Mg, K, Cl, S, and P at a few ppm levels in food, plant, and soil.



## MXRF Innovative Technology

E-lite is powered by Monochromatic X-ray Fluorescence (MXRF) technology: an elemental analysis technique offering significantly enhanced detection performance over traditional Energy Dispersive X-ray Fluorescence (EDXRF) technology. This technique applies state-of-the-art monochromating and focusing optics, enabling dramatically higher signal-to-background ratio compared to traditional polychromatic X-ray Fluorescence. **Figure 1** shows the basic configuration of MXRF and its use of focused monochromatic excitation.

Figure 1: MXRF Technology



## Features & Benefits

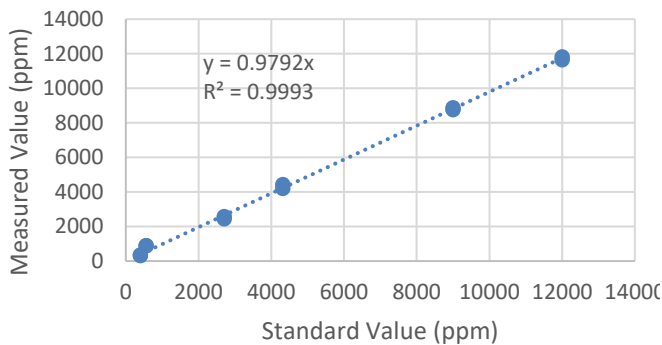
- Ultra-high signal-to-background ratio and ultra-low detection limit
- Robust Calibration with one curve covering entire range
- Minimum sample preparation enables on-site sampling and quantification



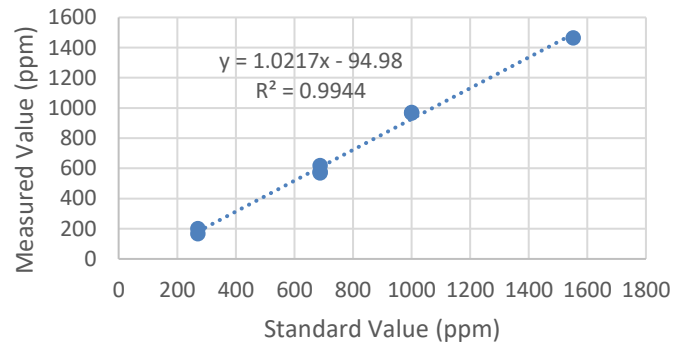
## Accuracy

The accuracy of Elite was verified by comparing the measurement results with various reference standards, as shown below,

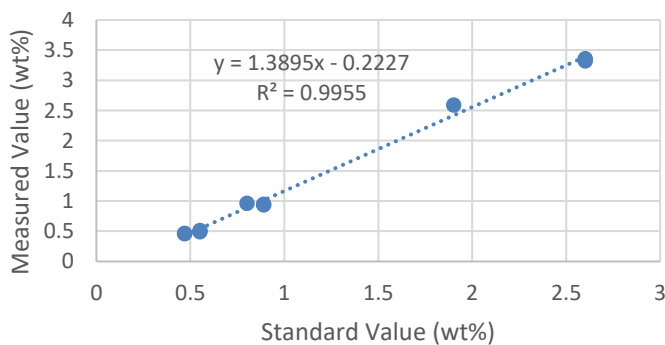
Mg in Plant



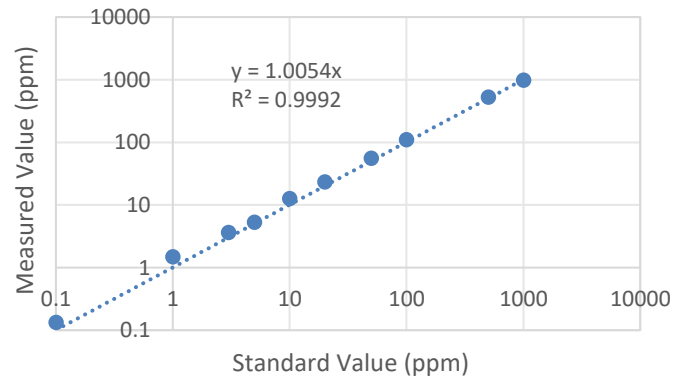
P in Soil



Na in Soil



P in Edible Oil



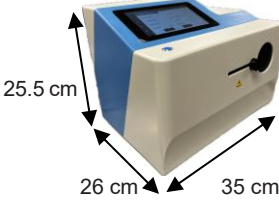


## Technical Specifications

### Limit of Detection & Applications

<b>E-lite</b>	Limit of Detection (ppm@ 300 s)	Na	Mg	Al	Si	P
		500	50	10	3	2
		S	Cl	K	Ca	
		0.3	0.2	0.2	0.2	
Applications		Lite elemental analysis in food, plant, and soil				

### E-lite Specifications

<b>Method Compliance</b>	EPA6200
<b>Measurement Time</b>	30-900 seconds
<b>Element Range</b>	Na - Ca
<b>Data Output</b>	Printout, Ethernet, USB, Internal Storage
<b>I/O Ports</b>	Ethernet 10/100, USB
<b>AC Power Supply</b>	110-240 VAC ± 10%, 50-60 Hz (hertz)
<b>Operating Temperature</b>	5°C to 40°C (41°F to 104°F)
<b>Operating Humidity</b>	30 – 85 %
<b>Weight</b>	10 kg (22 lbs)
<b>Dimensions</b>	<p>26 cm W x 35 cm L x 25.5 cm H</p> 



## Z-Spec & XOS

Z-Spec and XOS have partnered together to provide an easy-to-use, robust solution for sulfur analysis. By combining XOS' industry-leading XRF technology with Z-Spec's product-development expertise in the petroleum industry, we're able to deliver the most practical and effective solution to meet customer's application needs.

# Z-SPEC

15 Tech Valley Drive Suite 110  
East Greenbush, New York 12061 USA

# XOS®

15 Tech Valley Drive  
East Greenbush, New York 12061 USA